

Mothers of Inventions

- We often say, so-and-so is the inventor of something by wording it this way, "Robert Fulton is the father of the Steamboat". Or, that "Benjamin Franklin is considered the father of electricity".
- Before women's rights = Sometimes women had to get a husband or male figure to submit for a patent or market an invention to a corporation for sales campaigns.
- Let's think of who the '**mothers of inventions**' are; kind of awkward as we aren't used to putting it that way!

1. Which of the following was invented by a mother of invention (invented by a woman)?

- a) [Alternating Current](#)
- b) [Bakelite](#)
- c) [Windshield Wipers](#)
- d) [Band-Aid](#)

Mary Anderson was issued a patent for the windshield wipers in 1905.



2. Which of the following was invented by a mother of invention?

- a) [Anemometer](#)
- b) [Disposable Cell Phone](#)
- c) [Bikini](#)
- d) [Rolodex](#)

- In November of 1999, Randice Altschul was issued a series of patents for the world's first disposable cell phone.

She is a toy inventor. The story goes that, one day in 1996, she was talking on her phone while driving along the highway (tsk tsk - not acceptable behavior) & getting really frustrated that her phone signal kept fading in and out. She wanted to hurl the phone out of the window, which was what heralded her epiphany. Why not design a phone that you can use up & throw away?



3. Which of the following was invented by a mother of invention?

- a) [Cracker Jacks](#)
- b) [Raggedy Ann Doll](#)
- c) [Barbie Doll](#)
- d) [Mr. Potato Head](#)

- Ruth Handler invented Barbie doll in 1959.
- After watching her children cutting out paper dolls, she noticed that the children used them to act out the future, and she saw a need to create an older version of a doll. Ken – after her son.



- “Barbie's first words were, "Math class is tough." Mattel thought they were simply expressing the feelings of most school-age girls. Many parents and teachers, though, thought Barbie should keep her mouth shut.
- Shortly after that: As a result, Barbie stopped talking.”

http://www.ncc.org/curriculum/sac52_math.science.girls.html

4. Which of the following health-related innovations was *NOT* invented by a mother of invention?

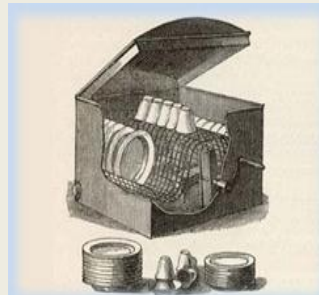
- a) [Disposable Diapers](#)
- b) [Nystatin](#)
- c) [Diabetes Test](#)
- d) [Band-Aids](#)

- In 1921, Earle Dickson took a piece of gauze and attached it to the center of a piece of tape, and then covered the product with crinoline to keep it sterile.
- His boss, James Johnson (Johnson & Johnson Co.), saw Dickson's invention as a quick way to have the materials handy as one fix, and decided to manufacture band-aids to the public.

5. Which of the following was invented by a mother of invention?

- a) [Graham Crackers](#)
- b) [Saran Wrap](#)
- c) [Rumford Fireplace](#)
- d) [Dishwasher](#)

- In 1886, Josephine Cochran invented the first practical dishwasher.



6. Which of the following was invented by a mother of invention?

- a) [White-Out](#)
- b) [Scotch Tape](#)
- c) [Fax Machine](#)
- d) [Hole Punch](#)

- It was originally called "mistake out" and was the invention of Bette Nesmith Graham. Graham invented liquid paper, also known as White-Out.



7. Which mother of invention was famous for her work with computers?

- a) [Ruth Handler](#)
- b) [Stephanie Louise Kwolek](#)
- c) [Grace Hopper](#)
- d) [Patsy Sherman](#)

- Grace Hopper Math/Physics at Vassar, then Yale; joined the Navy in 1943. was one of the first programmers to transform large digital computers from oversized calculators into relatively intelligent machines capable of understanding "human" instructions.
- Grace Hopper was a computer inventor best known for the *Mark* computer series & COBOL software

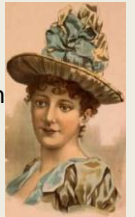


8. What year did a mother of invention first receive a US patent? And, is believed to be the *first US patent by a woman*?

- a) [1809](#)
- b) [1940](#)
- c) [1715](#)
- d) [1875](#)

Kies was the **first women** to receive a U.S. patent on May 15, 1809. Kies, a Connecticut native, invented a process for weaving straw with silk or thread for hat making & the New Eng. economy.

The Patent Act of 1790 opened the door for anyone, male or female, to protect his or her invention with a patent. **But**, since women couldn't own property, man women didn't bother.



9. What did mother of invention Margaret Knight invent?

- a) [Scotchgard](#)
- b) [Kevlar](#)
- c) [Colored Cotton](#)
- d) [Grocery Bag](#)

- Margaret Knight was an employee in a paper bag factory when she invented a new machine part to make square bottoms for paper *grocery bags*; but had to take a man to court to obtain the stolen patent.



- Her 1st invention was at the age of 12 while working in a textile mill, she witnessed an accident where a snagged thread caused a machine to injure workers. This experience led to her inventing a stop-motion device.

10. How many mothers of invention are there in total?

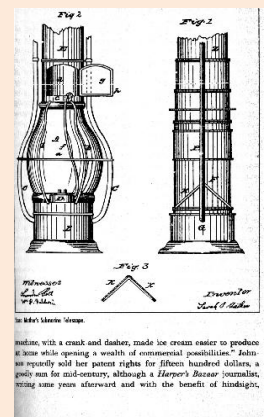
- a) [10,000](#)
- b) [150,000](#)
- c) [100,000](#)
- d) [More](#)

- Today, hundreds of thousands (d) of women apply for and receive a patent every year.

11. What did **Sarah Mather**, a mother of invention, receive a patent for?

- a) [submarine telescope and lamp](#)
- b) [fax machine](#)
- c) [pyrotechnic flare](#)
- d) [colored cotton](#)

- Sarah Mather received a patent for the invention of the a) submarine telescope and lamp in 1845.
- The telescope and lamp permitted vessels to survey the depths of the ocean.



12. Which of the following is a mother of invention for a new film developing method for NASA to take photos from space, but the method ended up having other practical uses in the photography of the day.

- a) Sarah Mather
- b) Barbara Askins
- c) Mary Dixon Kies
- d) Grace Hopper

Barbara Askins originally taught school, then returned to further her education after having 2 children. She won 'inventor of the year' in 1978



13. Which mother of invention is noted for inventing the modern brassiere?

- a) Sarah Mather
- b) Barbara Askins
- c) Mary Dixon Kies
- d) Mary Phelps Jacob

Mary Phelps Jacob – mostly, uncomfortable corsets were used before her invention. She sold her patent, and it took a long time to receive the credit as other companies did the marketing.



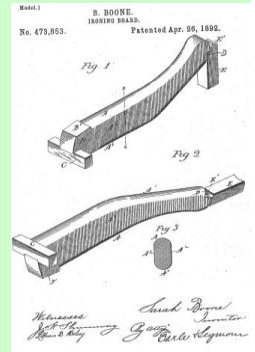
14. Who invented/patented the ironing board?

- a) Sarah Mather
- b) Barbara Askins
- c) Sarah Boone
- d) Grace Hopper

Reversible Ironing board 1892

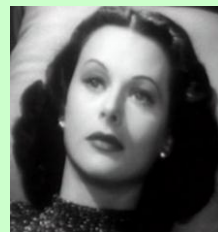
Sarah Boone

African-American woman received the Patent.



15. Which mother of invention secretly worked on a coding system, and it's importance was not recognized until later decades?

- Patsy Sherman
- Dr. Temple Grandin
- Hedy Lamarr
- Ann Moore



- Sultry 40s actress, Hedy Lamarr became a pioneer in the field of wireless communications following her emigration to the United States. Along with co-inventor George Anthiel, developed a "Secret Communications System" to help combat the Nazis in World War II. By manipulating radio frequencies at irregular intervals between transmission and reception, formulating an unbreakable code to prevent classified messages from being intercepted by enemy personnel.
- Lamarr and Anthiel received a patent in 1941, it galvanized the digital communications boom forming the technical backbone that makes cellular phones, fax machines and other wireless operations possible.

16. Who is credited with inventing the 1st circular saw?


- A. Tabitha Babbitt
- B. Marion Donovan
- C. Madame CJ Walker
- D. Dr. Patricia Bath

Tabitha Babbitt (1784-1854) invented the first circular saw used in a saw mill. Babbitt was working in the spinning house at the Harvard Shaker community in Massachusetts, when she decided to invent an improvement to the two-man pit saws that were being used for lumber production.

Tabitha Babbitt is also credited with inventing an improved version of cut nails, a new method of making false teeth, and an improved spinning wheel head.

17. Last question!

Who invented the Toll House cookie?

- A. Marion Donovan
- B. Madame CJ Walker 
- C. Dr. Patricia Bath
- D. Ruth Wakefield

- Ruth Wakefield graduated from the Framingham State Normal School in 1924. Along with husband, bought lodge named the Toll House Inn, where she prepared the recipes served.



- In 1930, Wakefield was mixing a batch of chocolate cookies. She discovered that she was out of baker's chocolate & substituted broken pieces of Nestlé's semi-sweet chocolate, expecting it to melt & absorb into the dough. When removed from the oven, she realized that she had accidentally invented "chocolate chip cookies."

